



# Product Overview

---

Innovation That Makes You Safe

# All From the Same Source



**VMS**



**Cyber-  
security**



**AI  
Analytics**



**Cameras**



**Storage**



**Integrations**



# Manage



Control Center



Control Center  
Mobile



IP Video Wall



Integra™



Management  
Hardware



# Control Center

---

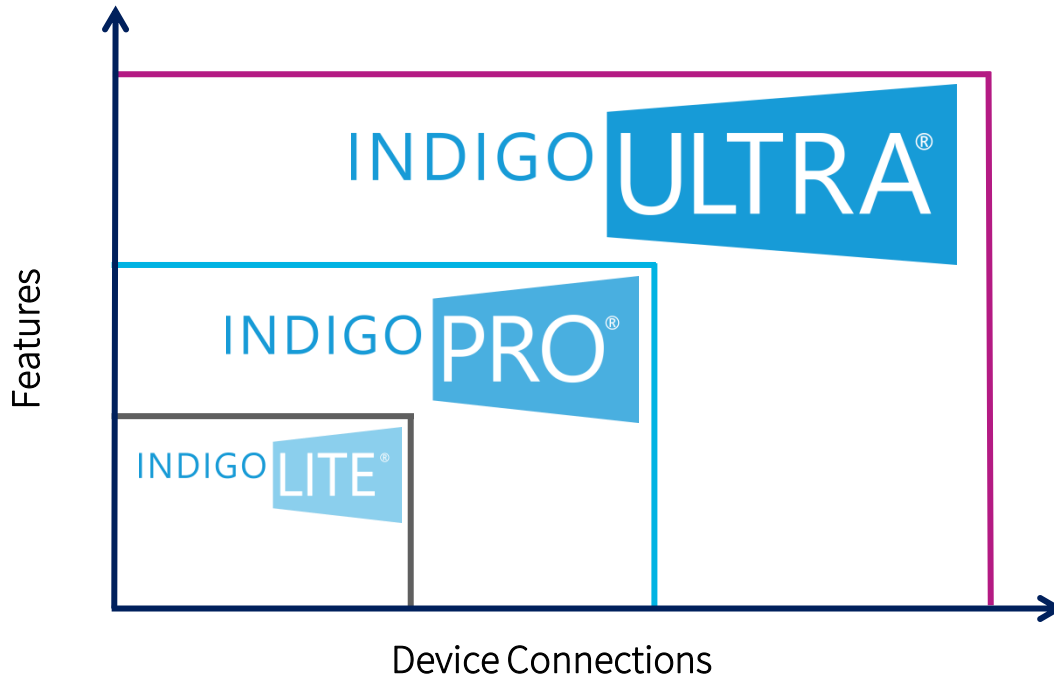
**Control Center** is IndigoVision's effective, scalable and robust security management solution.

It has an intuitive interface that provides easy system setup and efficient administration which save you both time and money.

Relentless testing and quality control 365 days a year ensure strong foundations for a robust, trusted security management solution.



# Control Center Tiers



Control Center is available for purchase in three tiered offerings.

How you choose is dependent on your systems' requirements

All tiers provide **unlimited** client workstations and connected NVR's.

Just establish the **features** you need and the number of device connections required for your security solution.



# Control Center Tier Overview

	INDIGO <b>ULTRA</b> <sup>®</sup>	INDIGO <b>PRO</b> <sup>®</sup>	INDIGO <b>LITE</b> <sup>®</sup>
Device Connections	Unlimited	Up to 80	Up to 40
Number of Client Workstations	Unlimited	Unlimited	Unlimited
Number of NVR-AS Connections	Unlimited	Unlimited	Unlimited
Features	Unlimited	Limited	Limited



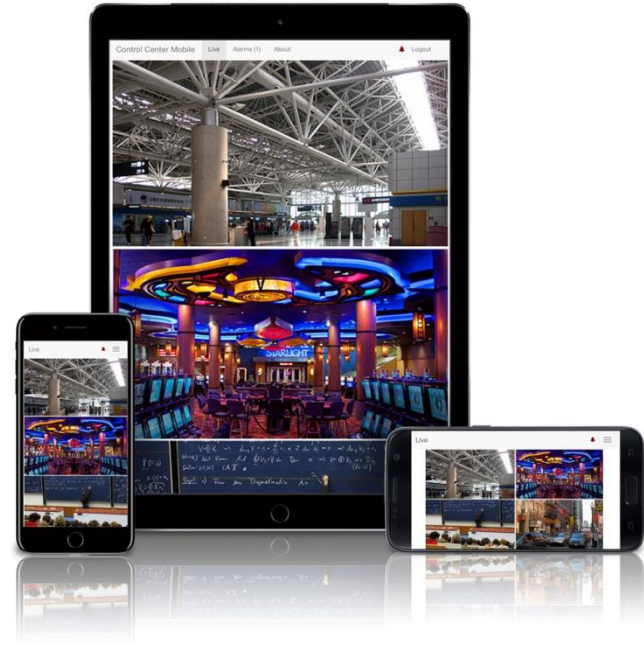
# Control Center Mobile

---

**Control Center Mobile** extends the surveillance capabilities of Control Center far beyond the control room to provide situational awareness on the move.

Security personnel can monitor live video, control PTZ cameras and manage alarms from any location over mobile and wireless IP networks using a mobile phone, tablet or PC-based web browser.

**Control Center Mobile** synchronizes to the Control Center site database so that it always reflects the current system configuration.



# IP Video Wall

---



Our IP Video Wall software enables a video wall to be constructed using slave workstations, each of which displays up to 100 panes of video across four monitors.

The video wall is controlled over an IP network by an unlimited number of master workstations.

The video wall is managed from Master Control Center workstations through a standard CCTV keyboard or Control Center. Monitors within the video wall can be used to display a variety of information; Video, Salvos, Maps, Alarm Video.





# Integra™

---

Introducing **Integra™**, our Control Room in a Box.

Combining a powerful workstation, integrated PoE switch and up to 24TB of storage for video recordings.

Supporting up to two monitors, the IndigoVision Integra™ can display up to 24 simultaneous video streams. Designed and configured for easy installation with performance guaranteed.

With software pre-installed and pre-licensed, just add a **Surveillance Keyboard**, a **Workstation Monitor** and cameras to get your site up and running.



# Integra™ View Workstations

---



Integra™ View Workstations allows you to remote monitor multiple Integra™ devices from a centralized location.

An Integra View™ Mini Workstation or Integra View™ Mid Workstation enables you to view all cameras, access recorded video and administer all sites centrally.

For sites containing up to 24 channels, the Integra™ View Mini Workstation is used.

For sites containing more than 24 channels, the Integra™ View Mid Workstation is used.

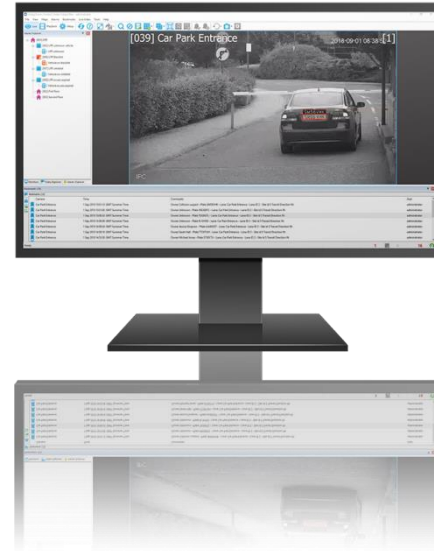


# LPR powered by Innoware

---

Integrated into IndigoVision Control Center, IndigoVision's LPR powered by InnoWare takes your system beyond traditional License Plate Recognition. Suitable for either parking-lot applications or free-flowing traffic, IndigoVision's LPR reads plates with a high level of accuracy and is supported in most countries.

Plate reads are indexed to recorded video from your IP cameras, allowing operators to search for full or partial license plates and instantly retrieve the associated recorded footage.



# Management Hardware



Platinum  
Client  
Workstation



Hybrid NVR  
Workstation



Mini Client  
Workstation



Workstation  
Monitor



Surveillance  
Keyboard



# Workstations and Monitor

---

**Platinum Client Workstation** is packed with Dual Intel® Core™ Xeon processors, 32GB of memory and AMD FirePro™ graphics. Supporting up to four monitors and displaying up to 44 simultaneous HD full frame rate video streams.

**Hybrid NVR Workstation** gives you 8TB of space, supporting up to four monitors and displaying up to 14 simultaneous HD full frame rate video streams. The **Mini Client Workstation** is a small but powerful machine that is perfect when space is limited in your Control Room.

**Workstation Monitor** is designed for pixel-perfect clarity and purpose-built for workspace versatility with full tilt, height, angle, and even complete rotation for portrait setup.



# Manage: Surveillance Keyboard

---



No more mouse! With a sleek design and intuitive to use our **Surveillance Keyboard** is optimised to access Control Center's Virtual Matrix and IP Video Wall.

This desktop keyboard has a 3-axis PTZ(Pan/Tilt/ Zoom) joystick and variable speed control which adjusts in proportion to zoom position. Combined with USB or RS232 connectivity to the PC running Control Center.

The Control Center Virtual Matrix allows the Surveillance Keyboard to control IndigoVision and most third party PTZ cameras including Pelco and Panasonic.



# Cyber-Security



---

CyberVigilant®



---

CyberVigilant® in Camera



# Manage: CyberVigilant®

---

CyberVigilant® is a unique cyber-security technology that's offers a quick response to potential cyber-threats.

Combining specific knowledge of the site and network traffic monitoring technology, CyberVigilant® utilises intrusion rules generated from the Site Database to trigger alarms within **Control Center** when an unauthorised attempt or intrusion has been detected.

Support for tagged VLANs is included, and CyberVigilant® can also log alarms using Syslog, integrating with Security Information and Event Management (SIEM) systems.





# Manage: CyberVigilant® in Camera

---



CyberVigilant® technology is now available in Camera and extends your organization's cyber-defences to the edge.

An enhanced firewall actively monitors and blocks unauthorized network traffic, triggering real-time alarms within Control Center when an unauthorized attempt or intrusion has been detected.

Available **free of charge** in our Ultra Range and in selected cameras in our BX Camera Range and supported in IndigoUltra, IndigoPro, and Integra™ via a firmware update.



# Artificial Intelligence



---

Artificial Intelligence  
powered by BriefCam



# Artificial Intelligence powered by BriefCam

---



BriefCam's powerful video analytics software uses the latest computer vision and deep learning technology to deliver innovative, market-leading security and operational efficiencies. Integrating with IndigoVision's security management solution, BriefCam extracts the value from recorded video.

The **Review** module enables super-fast video review and search capability, dramatically shortening your time-to-target. Condense hours of video from NVRs in your IndigoVision installation into just a few minutes, presenting only the items of interest to the operator. Produce exportable reports of your results, fully annotated. Search across multiple video sources for people and vehicles of interest and identify similar looking objects, including through the use of face recognition.



# Artificial Intelligence powered by BriefCam cont...

---



The **Research** module available in BriefCam Insights and Protect software provides comprehensive Business Intelligence, allowing you to make informed decisions to optimise your business operations. Visualise key performance indicators and perform trend analysis based on the classification of extracted video objects. Quantify the number of objects entering or dwelling within user-defined areas, travelling or dwelling along user-defined paths, or travelling between areas. Drill down to reveal further quantitative video insights.

The **Respond** module, also available in BriefCam Insights and Protect, enables alerts to be triggered in the BriefCam software in near realtime. Alert triggers include face recognition, objects in area, and class categories such as person, two-wheeled and other vehicles.



# Capture: IP Cameras



---

GX Camera  
Range



---

BX Camera  
Range



---

Ultra Camera  
Range



---

Specialized  
Camera Range



---

Body Worn  
Video



# Capture: GX Range



---

HD  
Bullet Camera  
(GX620)



---

HD  
Minidome Camera  
(GX420)



---

HD  
Pan/Tilt  
Minidome Camera  
(GX420)



# Capture: GX Range, HD Bullet Camera



Part of our GX Range, the HD Bullet Camera (GX620) delivers pin sharp detail at 2MP resolution that is fully ONVIF conformant.

Suitable for outdoor use with IK10 Protection Rating and built in IR Illuminator gives great image quality in all lighting conditions.

Stream up to 30fps thanks to superb video compression. Motion Detection and PoE for simple configuration are also included, giving you more than you bargained for!



# Capture: GX Range, HD Minidome Camera

---

Part of our GX Range, the HD Minidome Camera (GX420) delivers pin sharp detail at 2MP resolution that is fully ONVIF conformant.

Suitable for outdoor use with IK10 Protection Rating and built in IR Illuminator gives great image quality in all lighting conditions.

With up to 30fps video compression, Motion Detection and PoE also included for simple configuration.





# Capture: GX Range, HD Pan/Tilt Minidome Camera

---



The HD Pan/Tilt Minidome Camera (GX420) delivers pin sharp detail at 2MP resolution that is fully ONVIF conformant.

With an impressive 112° – 30° field of view, adjust the camera with ease using the motorized pan and tilt intelligence.

IK10 Protection Rating for outdoor use and built in IR Illuminator provides great image quality in all lighting conditions.

With up to 30fps video compression, Motion Detection and PoE also included, for straight forward configuration.



# Capture: BX Range



HD/4MP/4K  
Bullet Cameras  
(BX630)



HD/4MP/4K  
Fixed Cameras  
(BX630)



HD/4MP/4K  
Minidome Cameras  
(BX420)



4MP  
Microdome Cameras  
(BX430)



HD  
Adaptive IR PTZ Dome  
Camera (BX520)



HD/4MP  
PTZ Dome Cameras  
(BX520)



6MP/12MP  
Fisheye Camera  
(BX720)



8MP  
Panoramic Camera  
(BX720)

# Capture: BX Range, HD/4MP/4K Bullet Cameras

---

With BX HD, 4MP, and 4K Bullet Cameras you get supreme connectivity and flexibility, combined with great video and audio.

An IP67/IK10 Protection Rating combined with extensive form factors for a wide range of environments. Combined with PoE/PoE+ for simple configuration and ONVIF conformance.

Video Analytics such as Motion Detection, Hooded, Tripwire, Intrusion, Abandoned and Missing are also included all with up to 30fps.



# Capture: BX Range, HD/4MP/4K Fixed Cameras

---



With BX HD, 4MP, and 4K Fixed Cameras you get supreme connectivity and flexibility, combined with great video and audio.

An IP67/IK10 Protection Rating combined with extensive form factors for a wide range of environments. Combined with PoE/PoE+ for simple configuration and ONVIF conformance.

Video Analytics such as Motion Detection, Hooded, Tripwire, Intrusion, Abandoned and Missing are also included all with up to 30fps.



# Capture: BX Range, HD/4MP/4K Minidome Cameras

---

With BX HD, 4MP, and 4K Minidome Cameras you get supreme connectivity and flexibility, combined with great video and audio.

An IP67/IK10 Protection Rating combined with extensive form factors for a wide range of environments. Combined with PoE/PoE+ for simple configuration and ONVIF conformance.

Video Analytics such as Motion Detection, Hooded, Tripwire, Intrusion, Abandoned and Missing are also included all with up to 30fps.



# Capture: BX Range, 4MP Microdome Cameras

---



Part of our BX Range, the 4 Megapixel (4MP) Microdome Camera (BX430) delivers pin sharp detail at 4MP resolution that is fully ONVIF conformant.

With a big feature set, but a small form factor the BX Range 4MP Microdome Camera is available in a discreet In-Ceiling or an IK10/IP67 Vandal-Resistant variant.

Video Analytics such as Motion Detection, Hooded, Tripwire, Intrusion, Abandoned and Missing are also included all with up to 30fps.



# Capture: BX Range, HD Adaptive IR PTZ Dome Camera

---

Part of IndigoVision's professional BX Range, the HD Adaptive IR PTZ Dome Camera delivers High Definition detail, regardless of ambient light.

When used as part of IndigoVision's end-to-end system, any single point of failure is removed through IndigoVision's Distributed Network Architecture (DNA) technology.



# Capture: BX Range, HD/4MP PTZ Dome Cameras

---

IndigoVision's BX HD PTZ Dome Camera has had a sensor upgrade utilising the latest innovative Sony CMOS sensor technology, STARVIS.

This back-illuminated pixel technology provides stunning video quality in all lighting conditions and brings significant improvements in Low Light and WDR capabilities.

This updated camera is available in two variants, Vandal Resistant In-ceiling (IK10) and Vandal Resistant Environmental Pendant (IK10, IP67), both coupled with POE+ powered heaters for cold climates.

Powerful advanced analytics such as Motion Detection, Hooded, Tripwire, Intrusion, and Object Abandoned are also included.





# Capture: **BX Range, 6MP/12MP Fisheye Camera**

Part of IndigoVision's professional BX Range, the Fisheye Camera delivers 360° visibility with pin sharp detail perfect for ceiling installation.

Giving you the same coverage as four traditional security cameras, without the need for additional workstation processing power as edge warping is done in the camera to dewarp and decode the wide-angle video.

Powerful advanced analytics such as Motion Detection, Hooded, Tripwire, Intrusion, and Object Abandoned are also included.



# Capture: BX Range, 8MP Panoramic Camera

---



Part of IndigoVision's professional BX Range, the Panoramic Dome Camera delivers 180° visibility with pin-sharp detail in all lighting thanks to built in IR and WDR.

With four self-aligning sensors creating an overall 8MP (4096 x 1800) 180° Panoramic View, you can see and hear more. Video is seamlessly stitched into a single image direct from the camera.

Powerful advanced analytics such as Motion Detection, Hooded, Tripwire, Intrusion, and Object Abandoned are also included.



# Capture: HD Ultra Range



---

HD Ultra  
Minidome Camera



---

HD Ultra  
Bullet Camera



---

HD Ultra Pendant  
PTZ Camera



# Capture: Ultra Range, HD Ultra Minidome Camera

---

With best in class performance, the HD Ultra 2K Minidome Camera delivers rich, Full HD video and image clarity, in all lighting conditions.

Our SMART.core technology gives highly optimised H.264 compression and ACF+, reducing storage costs by up to 95%.

Advanced on-board analytics alert operators when people, or vehicles, enter unauthorised locations, areas are congested, items are stolen or camera vision is obscured.



# Capture: Ultra Range, HD Ultra Bullet Camera

---



With best in class performance, the HD Ultra Bullet Camera delivers rich, Full HD video and image clarity, in all lighting conditions. Image stabilisation and ultra-low PTZ latency gives smoother operator viewing and control.

Our SMART.core technology gives highly optimised H.264 compression and ACF+, reducing storage costs by up to 95%.

Advanced on-board analytics alert operators when people, or vehicles, enter unauthorised locations, areas are congested, items are stolen or camera vision is obscured.



# Capture: Ultra Range, HD Ultra Pendant PTZ Camera

---



With best in class performance, the HD Ultra Pendant PTZ Camera delivers rich, Full HD video and image clarity, in all lighting conditions. Image stabilisation and ultra-low PTZ latency gives smoother operator viewing and control.

Our SMART.core technology gives highly optimised H.264 compression and ACF+, reducing storage costs by up to 95%.

Advanced on-board analytics alert operators when people, or vehicles, enter unauthorised locations, areas are congested, items are stolen or camera vision is obscured.



# Capture: HD Ultra X Range



---

HD Ultra X Minidome



---

HD Ultra X Bullet



---

HD Ultra X PTZ



# Capture: Ultra Range, HD Ultra X Minidome Camera

With best in class performance, the IndigoVision HD Ultra X Minidome Camera delivers rich, full HD video and image clarity, in all lighting conditions.

IndigoVision's SMART.core™ technology gives highly optimised H.265 compression, reducing storage costs by up to 95%.





# Capture: Ultra Range, HD Ultra X Bullet Camera

---



With best in class performance, the IndigoVision HD Ultra X Bullet Camera delivers rich, full HD video and image clarity, in all lighting conditions.

IndigoVision's SMART.core™ technology gives highly optimised H.265 compression, reducing storage costs by up to 95%.



# Capture: Ultra Range, HD Ultra X PTZ Camera

---

With best in class performance, the IndigoVision HD Ultra X PTZ Dome Camera delivers rich, full HD video and image clarity, in all lighting conditions. Image stabilisation and ultra-low PTZ latency gives smoother operator viewing and control.

IndigoVision's SMART.core™ technology gives highly optimised H.265 compression and ACF, reducing storage costs by up to 95%.



# Capture: Specialized Range



---

HD  
Interceptor  
PTZ Camera



---

HD  
XF & XP ATEX  
Camera



---

BX Thermal  
Bullet Camera



# Capture: Specialized Range, HD Interceptor PTZ Camera



With integrated white and infrared lighting, flat glass and 129mm lens the IndigoVision High Definition (HD) Interceptor PTZ Camera delivers amazing 1080p video, regardless of ambient light.

Ruggedized, with IP68 and IK10 rating, and with an operating temperature range of -40°C to 60°C, the Interceptor can easily cope with the most challenging environments.

Powerful advanced analytics such as Motion Detection, Hooded, Tripwire, Intrusion, and Object Abandoned are also included.



# Capture: Specialised Range, XF & XP HD ATEX Cameras

Designed for safety, the IndigoVision XF HD 30x Fixed and XP HD 30x PTZ ATEX cameras deliver outstanding video, without the spark.

Fully ATEX, IECEx, UL/CSA and INMETRO certified, these cameras are built to perform in a wide range of hazardous installations, where safety is paramount.

Powerful advanced analytics such as Motion Detection, Hooded, Tripwire, Intrusion, and Object Abandoned are also included.



# Capture: Specialised Range, BX Thermal Bullet Camera



Together with Thermal Technology, the BX Thermal Bullet Camera is the perfect solution for dark, long range monitoring applications.

You also get maximum reliability, and the other significant benefits of IndigoVision's Distributed Network Architecture. The BX Thermal Bullet Camera delivers a different dimension of safety when combined with IndigoVision's Control Center.



# Frontline 2

---



Wearing FrontLine 2, IndigoVision's Body Worn Video camera, every incident is seen, heard and recorded thanks to its incredible 28 hours, encrypted on-board recording, 130° lens, HD video and high fidelity audio.

It's robust too. An IP54 Rated, impact resistant casing and weatherproof micro USB means the FrontLine 2 can withstand the toughest of environments.

FrontLine 2 is also highly configurable, with four programmable control buttons and pre-record functionality.



# Capture: Analogue Encoders



---

9000 Range



---

BX Range





# Capture: 9000 Range Encoders

---

Available in a dual channel variant, the 9000 Range delivers powerful and cost-effective migration from analogue to IP. With highly optimised H.264 compression and ACF+ technology, storage costs are reduced by up to 95% and video quality is greatly improved.

Completely integrated with Control Center and our Network Video Recorders (NVRs) providing a world class IP video solution that's trusted by some of the most demanding security installations in the world.



# Capture: BX130 8/16 Channel Encoder

---

Cost-effective analogue to world class IP video migration.



The BX130 8/16 Channel Encoder delivers cost-effective migration from analogue to IndigoVision's renowned world class IP solution. The BX130's outstanding H.264 compression, reduced storage and better video quality than other mid-range encoders.

Completely integrated with Control Center and our Network Video Recorders (NVRs) providing a world class IP video solution that's trusted by some of the most demanding security installations in the world.

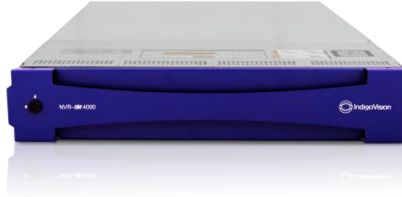


# Record



---

Compact NVR-AS 4000



---

Enterprise NVR-AS 4000



---

Large Enterprise  
NVR-AS 4000



# Record: Compact NVR-AS 4000

---



With recording and simultaneous playback for up to 20 cameras, the IndigoVision Compact NVR-AS 4000 is ideal for smaller installations or for installations designed with distributed storage.

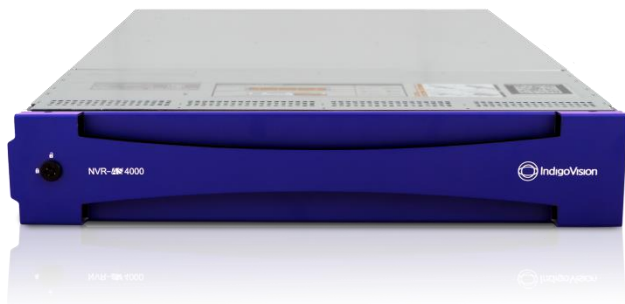
With a Hard Disk Drive (HDD) that's optimised for 24/7 video recording, the Compact NVR-AS 4000 has recording support for multiple camera manufacturers.

Available with IndigoVision's SMART.guard™ technology ensures your footage is protected in a **five layered process** to ensure your NVR is always dependable.



# Record: Enterprise NVR-AS 4000

---



With double the performance of the nearest alternative, the IndigoVision Enterprise NVR-AS can record up to 200 cameras, has data throughput of 2Gbps and up to 140TB usable storage.

Guaranteed tamper free evidence, automatic failover and integrated backup. Available with Windows or Linux, the Enterprise NVR-AS can also integrate other security systems for complete alarm management and has recording support for multiple camera manufacturers.

IndigoVision's SMART.guard™ technology ensures your footage is protected in a **five layered process** to ensure your NVR is always dependable.



# Record: Large Enterprise NVR-AS 4000

---



With seven times the performance of the nearest alternative, the IndigoVision Large Enterprise NVR-AS 4000 can record up to 800 channels, has data throughput of 4Gbps and up to 3.0PB of usable storage.

Guaranteed tamper free evidence, automatic failover and integrated backup. The Large Enterprise NVR-AS can also integrate other security systems for complete alarm management and has recording support for multiple camera manufacturers including ONVIF.

IndigoVision's SMART.guard™ technology ensures your footage is protected in a **five layered process** to ensure your NVR is always dependable.



# Integrate



ONVIF®



Camera Gateway™



Integration Modules



Software  
Development Kit  
(SDK)



# ONVIF®

---



ONVIF®'s vision is aligned with our vision to create a truly open end-to-end system, and being a member gives our customers confidence that we do what we say.

IndigoVision is an ONVIF® “User” member and this gives our customers confidence that IndigoVision as a company is standards based and fully interoperable with other vendors’ hardware and software.

ONVIF® Profile S is designed for IP-based video systems. Our security management solution, Control Center, is Profile S conformant as are all of our cameras/encoders\*.

\*Except our Frontline 2 and Ultra 5K cameras.





# Camera Gateway™

---

The IndigoVision Camera Gateway™ enables cameras from a range of other manufacturers to be connected to the IndigoVision Control Center suite.

It takes video streams from other manufacturers' cameras using their native protocols and integrates them into the Control Center front-end application.

Camera Gateway™ also supports audio, PTZ control, events and outputs. The cameras do not need to support ONVIF in order to connect to the IndigoVision system, giving a wide choice of cameras to integrate.



# Integration Modules

---



IndigoVision's Integration Modules integrate third party systems such as Access Control, Facial Recognition and intruder detection systems with Control Center, IndigoVision's complete suite of management software.

The modules allow a flow of events between IndigoVision and the external system in a totally seamless fashion to deliver a fully integrated security solution.

Third party events can trigger a wide range of actions within the IndigoVision system including starting recordings, displaying live video, moving PTZ cameras and sending notification emails. Some third party systems can also receive events from IndigoVision.



# Software Development Kit (SDK)

---

The IndigoVision Software Development Kit (SDK) allows software developers to integrate third party applications with the IndigoVision IP Video and Alarm Management System.

Available to Authorised Partners free of charge, on the IndigoVision Product CD SDK consists of six components:

- IndigoVision Binding Kit
- Custom Objects
- Control Center Automation Interface
- IndigoVision Snap
- Control Center Site Database SDK
- Control Center Video SDK





# Any Questions?

